



HAWK CZ135

Mounted onto an Toyota Hi Lux or Isuzu D Max

Working Height **13.6m**

Maximum Outreach **6.8m**

Maximum SWL **220kg**





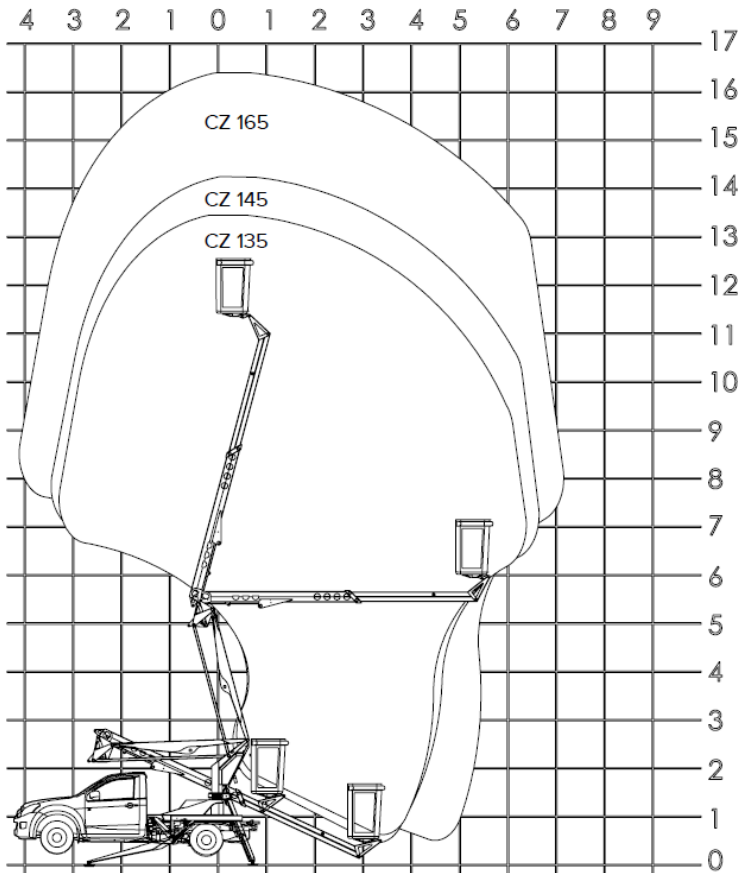
HAWK CZ135

Mounted onto an Toyota Hi Lux or Isuzu D Max

HAWK CZ FEATURES

- Articulated Telescopic Boom Configuration
- Canbus safety Control System
- Great Payload in the Vehicle compared to other Manufacturers
- Ability to raise the vehicle on stabilisers so Not overloading the axles on outreach
- Load Moment Sensing, Giving Greater Outreach, than other manufacturers
- 2-Man GRP Composite Bucket with **Insulating Harness Anchors**
- Hydraulic Boom Extension
- Ground Controls
- 360deg Slew Rotation
- Self-Lubricated Bushes for long life and No greasing required
- Live Hydraulic Controls

- Manufactured to ISO EN280:2013 rev2
- Auxiliary Electric Power Pack for Raise and Lower
- Auxiliary Hand pump for Raise and Lower of Booms and Stabilisers
- Engine Start/Stop at Bucket and Ground
- Emergency Stops
- Built in Fault monitoring
- True Great British Design and Built Aerial Device
- LED display lights for Fault diagnostics



OPTIONS

- Walk In Bucket
- Lighting
- Slew Sensitive Outreach
- 5Kv Chassis Isolation
- Spreaderfeet
- Many others on request



ALDERCOTE LIMITED

Woodhouse Street, Kingston upon Hull. HU9 1RJ
United Kingdom

Tel:- +00 44 (0)1482 222377 email:-sales@aldercote.com

www.aldercote.com

We reserve the right to amend and change specifications at any time

