



HAWK VZ140

Mounted onto an Iveco Daily 5.2t Van Medium Wheelbase High Roof

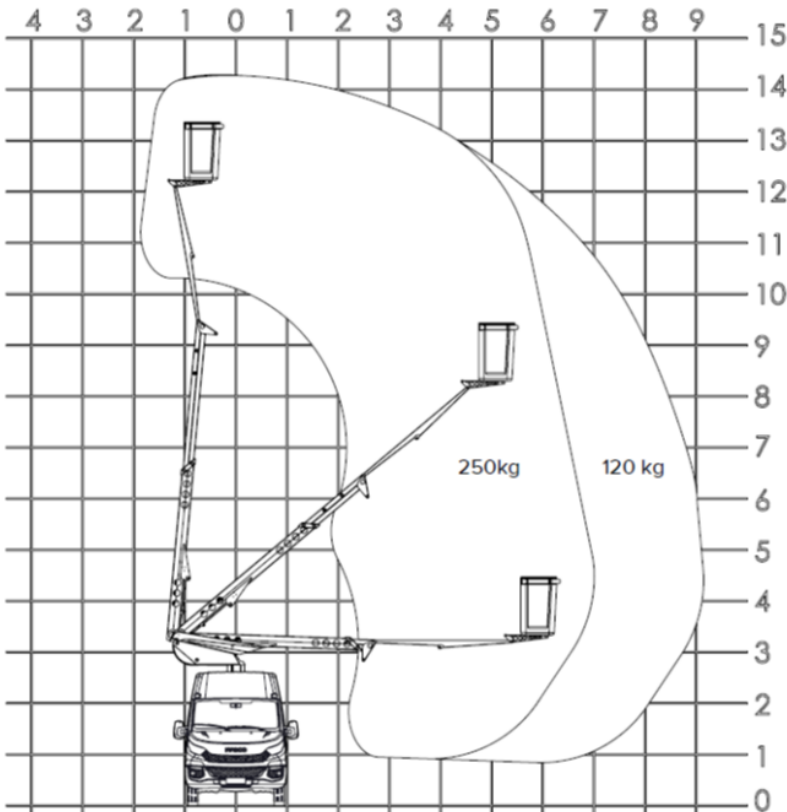


IVECO

HAWK VZ FEATURES

- Reverse Articulated Telescopic Boom Configuration
- Canbus Control System
- Great Payload in the Vehicle compared to other Manufacturers
- Great Space in the Vehicles
- Load Moment Sensing, Giving Greater Outreach, than other manufacturers
- 2-Man GRP Composite Bucket with **Insulating Harness Anchors**
- Hydraulic Boom Extension
- Ground Controller Keypad c/w 5m of Wander lead
- 410deg Slew Rotation
- Self-Lubricated Bushes for long life and No greasing required
- Slew rotation Bearing inside the van at eye level for easy of greasing with eliminated working at

- Manufactured to ISO EN280:2013 rev2
- Auxiliary Electric Power Pack for Raise and Lower
- Auxiliary Hand pump for Raise and Lower of Booms and Stabilisers
- E drive (Self charging Hybrid system)
- Emergency Stops
- Built in Fault monitoring
- GRP Composite components Fitted for Fuel Saving
- True Great British Design and Built Aerial Device
- Can Mount onto REAR Wheel Drive & Front Wheel Drive.
- LED display lights for Fault diagnostics
- Damping at the ends of the cylinder strokes
- “Zero tail swing” so the platform will be within the width of the van or van mirrors



ALDERCOTE LIMITED

Woodhouse Street, Kingston upon Hull. HU9 1RJ
United Kingdom

Tel:- +00 44 (0)1482 222377 email:-sales@aldercote.com

www.aldercote.com



We reserve the right to amend and change specifications at any time