

## ARTICULATING TELESCOPIC AERIAL DEVICE

Altec's TA41 features Twin or Single Bucket configuration.

A ROBUST HEAVY DUTY DESIGN for increased versatility and manoeuvrability for maintenance work.



### FEATURES

- Insulating, ANSI Category C
- Altec ISO-Grip® Control System (U.S. Patent No. 7,416,053)
- 4-Function, Single Handle Upper Control dielectrically tested to 40 kV AC with no more than 400 microamperes of leakage. The control handle is green in colour to differentiate it from other non-tested controllers
- Compensated Articulating Arm
- Fiberglass Lower Boom and Telescopic Inner Boom
- Fiberglass Single 2-Man Platform, 24" x 48" x 42"
- Hydraulic Boom Extension
- Platform Access from Ground
- Hydraulic 180° Platform Rotation with Platform Tilt
- Full-Pressure, Open-Centre Hydraulic System
- Emergency Stop Valves at all Upper and Lower Control Stations
- Easily Mounted on 14,000kg GVW Chassis
- Tool Circuit at Platform
- 2-Man Platform with 180° Platform Rotation and 272kg Platform Capacity
- Secondary Stowage System
- Engine Start/Stop
- Second Tool Circuit at Platform

## OPTIONS

- TWIN Bucket Option
- Emergency Pump run function on engagement of PTO
- Set of spreaderfeet
- Many others on request

# Altec TA41s&D

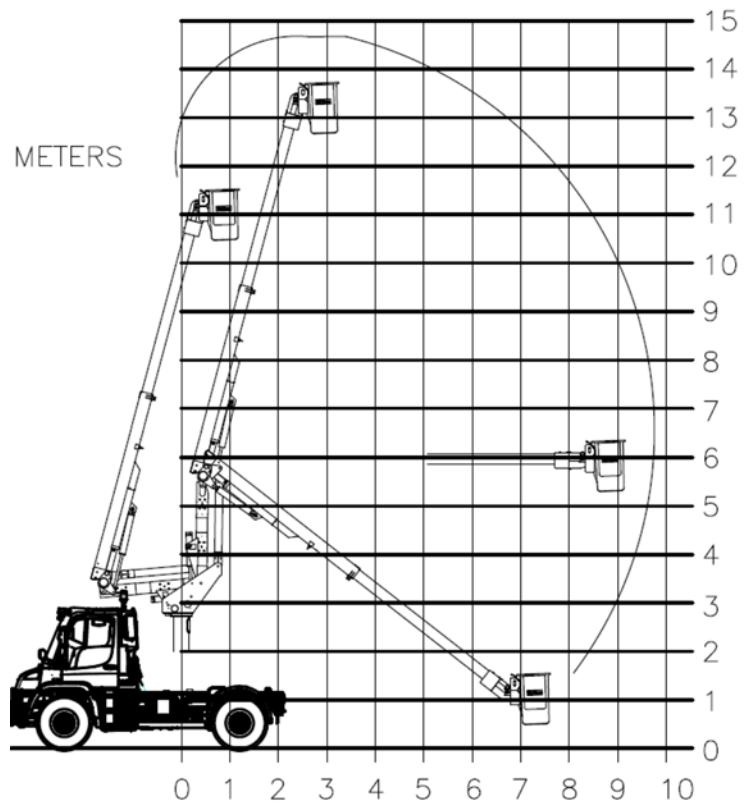
ARTICULATING TELESCOPIC AERIAL  
DEVICE



UNIT MEETS OR EXCEEDS ANSI 92.2 STANDARDS AND ALSO THE NEW EUROPEAN EN61057



The Altec twin and single 2 man bucket options



### SPECIFICATIONS

	TA41S	TA41D
WORKING HEIGHT (m)	14.7	14.7
OUTREACH (m)	9.8	9.8
S.W.L. (kg)	272	2 x 109
VEHICLE MIN. GVW (kg)	12000	12000

ALD-TA41S&D-2016 rev01