

OVERCENTRE AERIAL DEVICE

Holan 806-37 features an added material handling package

Also with the jib and winch fitted the bucket capacity is **NOT** reduced as other makes

A ROBUST HEAVY DUTY DESIGN for increased versatility and maneuverability for maintenance work.



FEATURES

- Insulating, ANSI Category C
- Altec ISO-Grip® Control System (U.S. Patent No. 7,416,053)
- Single Handle Upper Control dielectrically tested to 40 kV AC with no more than 400 microamperes of leakage. The control handle is green in colour to differentiate it from other non-tested controllers
- Over Centre Design
- Fiberglass Lower Boom and Upper Inner Boom Inserts
- Fiberglass Twin Single Man Buckets
- Platform Access from Ground
- Holan Jib Capacities up to 907kg
- Hydraulic 90° Bucket Rotation
- Full-Pressure, Open-Centre Hydraulic System
- Emergency Stop Valves at all Upper and Lower Control Stations
- Easily Mounted on 15,000kg GVW Chassis
- Twin Tool Circuit at Platform of twin buckets
- Secondary Stowage System
- Engine Start/Stop
- Dual Controls on twin bucket option to meet new ANSI
- Lower Boom Stow Protection

OPTIONS

- Emergency Pump run function on engagement of PTO
- Set of spreaderfeet
- Different Styles of Stabilisers
- Many others on request



Holan 806-37

OVERCENTRE AERIAL DEVICE

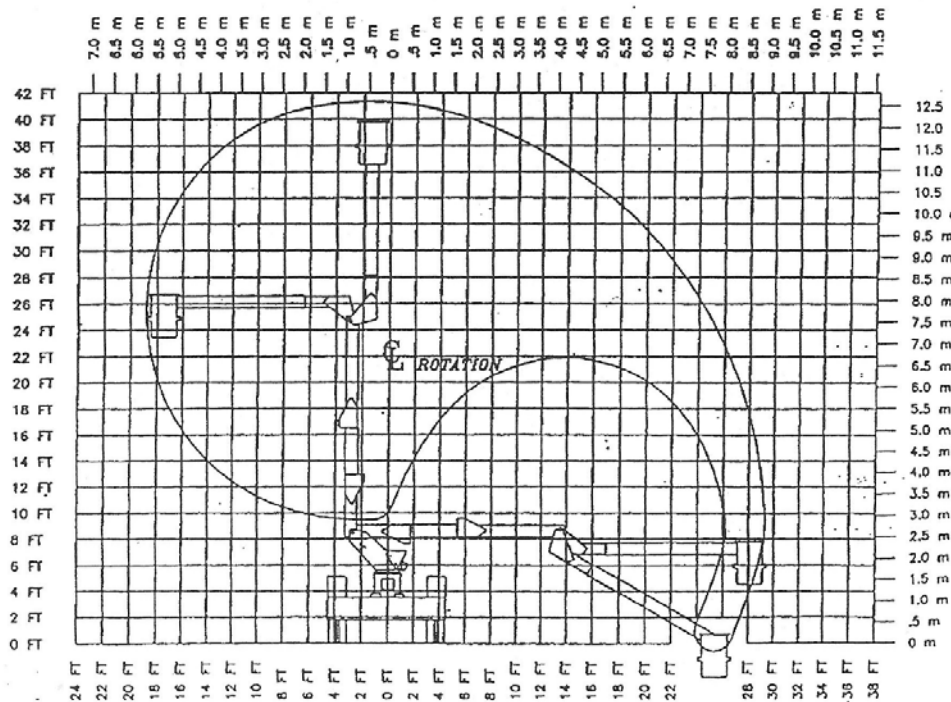


UNIT MEETS OR EXCEEDS ANSI 92.2 STANDARDS AND ALSO THE NEW EUROPEAN EN61057



The Jib makes removing and Installing transformers safer and smarter

As Below the Buckets Reach the Ground For Safety of Entry & Exiting Ground



SPECIFICATIONS

WORKING HEIGHT (m)	13.3
OUTREACH (m)	9.6
S.W.L. (kg)	2 x 136
Max. Lifting Capacity (kg)	907
VEHICLE MIN. GVW (kg)	15000

ALD-80637-2016 rev01