

ARTICULATING TELESCOPIC AERIAL DEVICE

Altec's TA50 features an added material handling package

Also with the jib and winch fitted the bucket capacity is **NOT** reduced as other makes

A ROBUST HEAVY DUTY DESIGN for increased versatility and maneuverability for maintenance work.



FEATURES

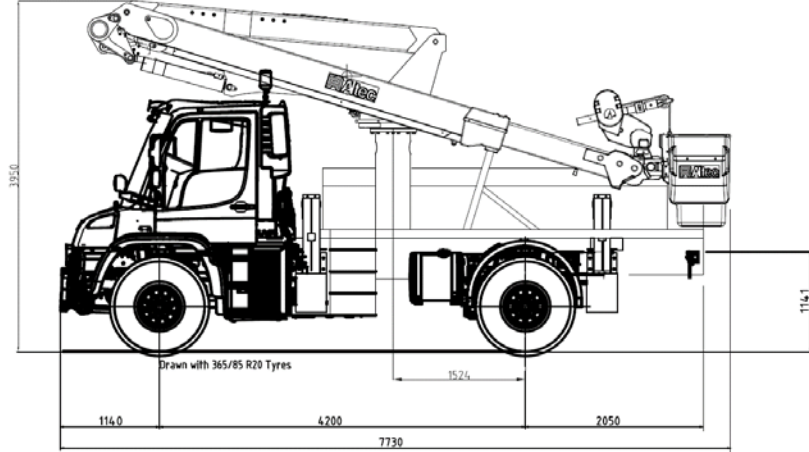
- Insulating, ANSI Category C
- Altec ISO-Grip® Control System (U.S. Patent No. 7,416,053)
- 4-Function, Single Handle Upper Control dielectrically tested to 40 kV AC with no more than 400 microamperes of leakage. The control handle is green in colour to differentiate it from other non-tested controllers
- Compensated Articulating Arm
- Fiberglass Lower Boom and Telescopic Inner Boom
- Fiberglass Single 2-Man Platform, 24" x 48" x 42"
- Hydraulic Boom Extension
- Platform Access from Ground
- Altec ARM Jib Capacities up to 455kg
- Hydraulic 180° Platform Rotation with Platform Tilt
- Full-Pressure, Open-Centre Hydraulic System
- Emergency Stop Valves at all Upper and Lower Control Stations
- Easily Mounted on 14,000kg GVW Chassis
- Tool Circuit at Platform
- 2-Man Platform with 180° Platform Rotation and 272kg Platform Capacity
- Secondary Stowage System
- Engine Start/Stop
- Second Tool Circuit at Platform

OPTIONS

- TWIN Bucket Option
- Emergency Pump run function on engagement of PTO
- Strong Arm Jib Removal Lift and Storage System
- Set of spreaderfeet
- Many others on request

Altec TA50

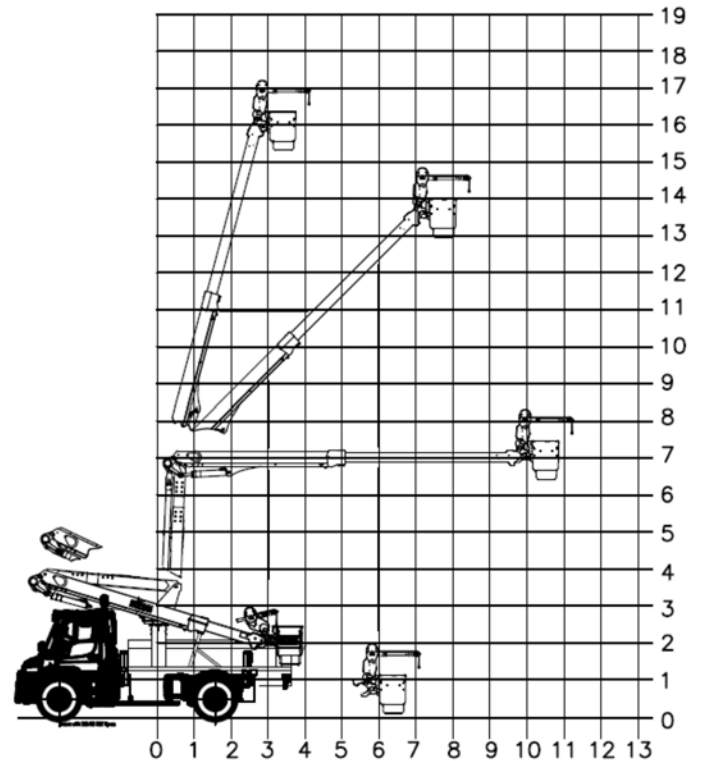
ARTICULATING TELESCOPIC AERIAL DEVICE



UNIT MEETS OR EXCEEDS ANSI 92.2 STANDARDS AND ALSO THE NEW EUROPEAN EN61057



The Altec ARM Jib makes removing and installing transformers safer and smarter



SPECIFICATIONS

WORKING HEIGHT (m)	17.1
OUTREACH (m)	11.5
S.W.L. (kg)	272
Max. Lifting Capacity (kg)	455
VEHICLE MIN. GVW (kg)	14000

ALD-TA50-2016 rev01